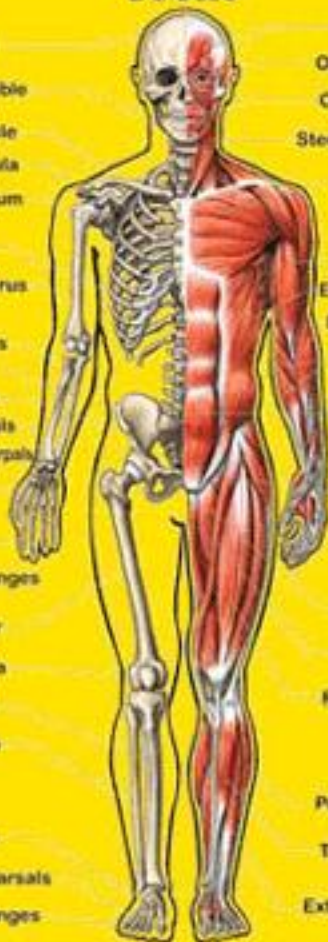




Skeletal and Muscular Systems

Front

Skull
Mandible
Clavicle
Scapula
Sternum
Ribs
Humerus
Radius
Ulna
Pelvis
Carpals
Metacarpals
Phalanges
Femur
Patella
Tibia
Fibula
Talus
Metatarsals
Phalanges



Frontalis
Orbicularis oculi
Orbicularis Oris
Sternocleidomastoid
Pectoralis m.
Biceps
External Oblique
Brachioradialis
Flexors
Rectus Abdominis
Tensor fasciae latae
Pectineus
Sartorius
Rectus femoris
Peroneus longus
Tibialis anterior
Extensor Digitorum

Back

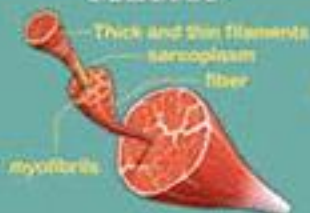
Trapezius
Deltoid
Latissimus Dorsi
Triceps
Extensors
Gluteus Maximus
Biceps Femoris
Semitendinosus
Gastrocnemius
Soleus
Calcaneal Tendon



Bones



Muscle



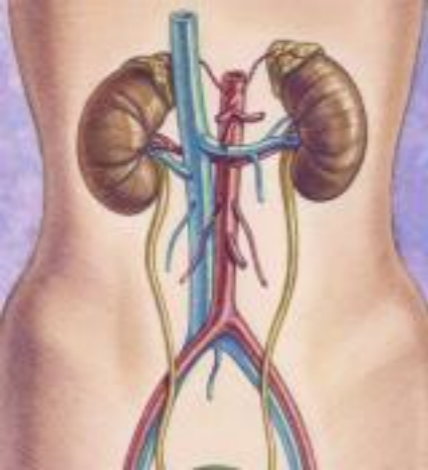
The Lever

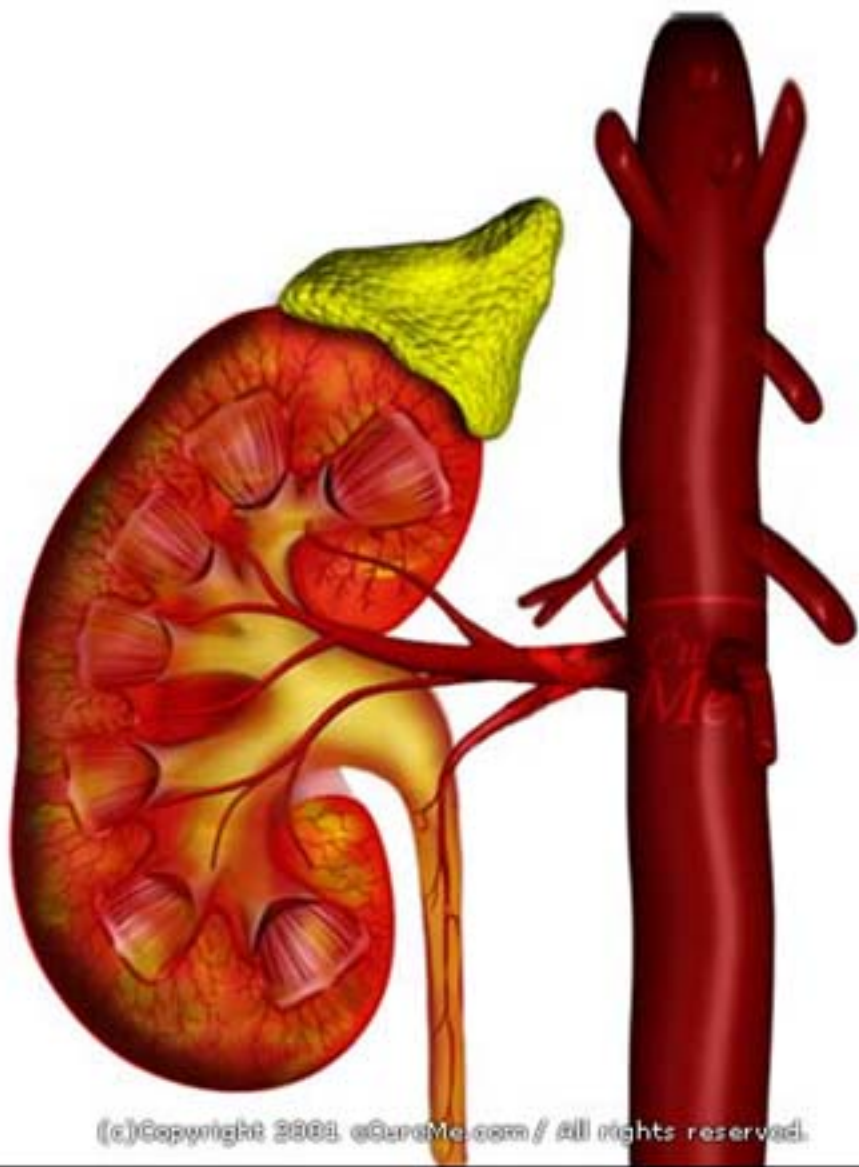




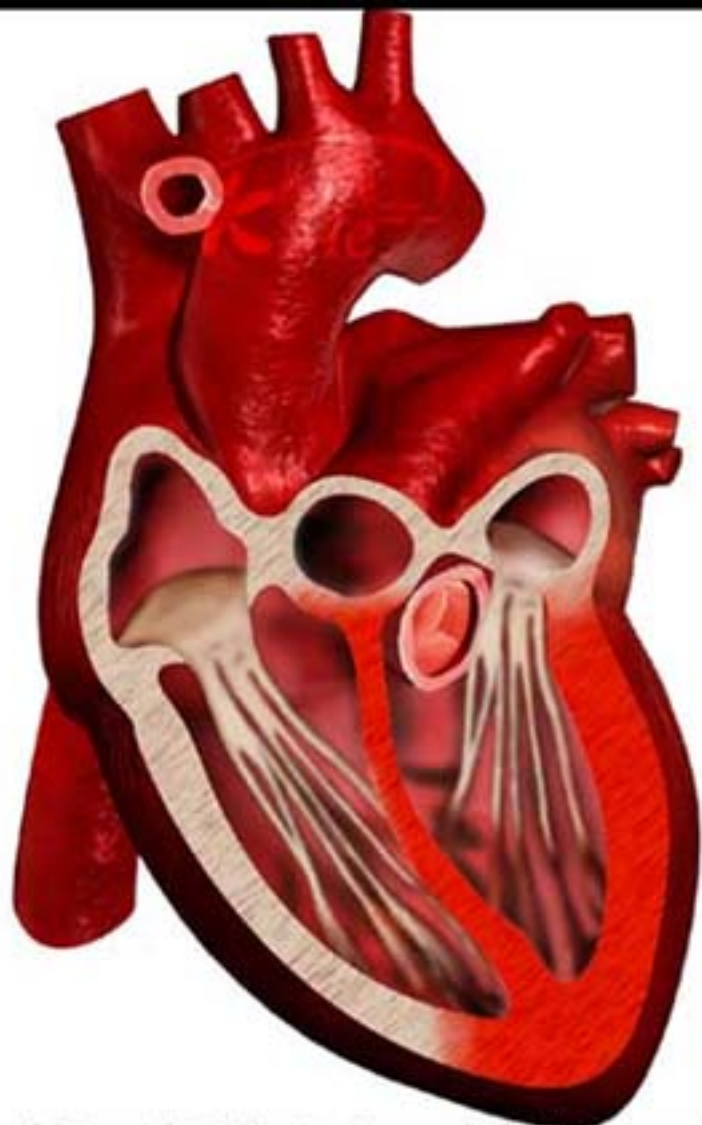




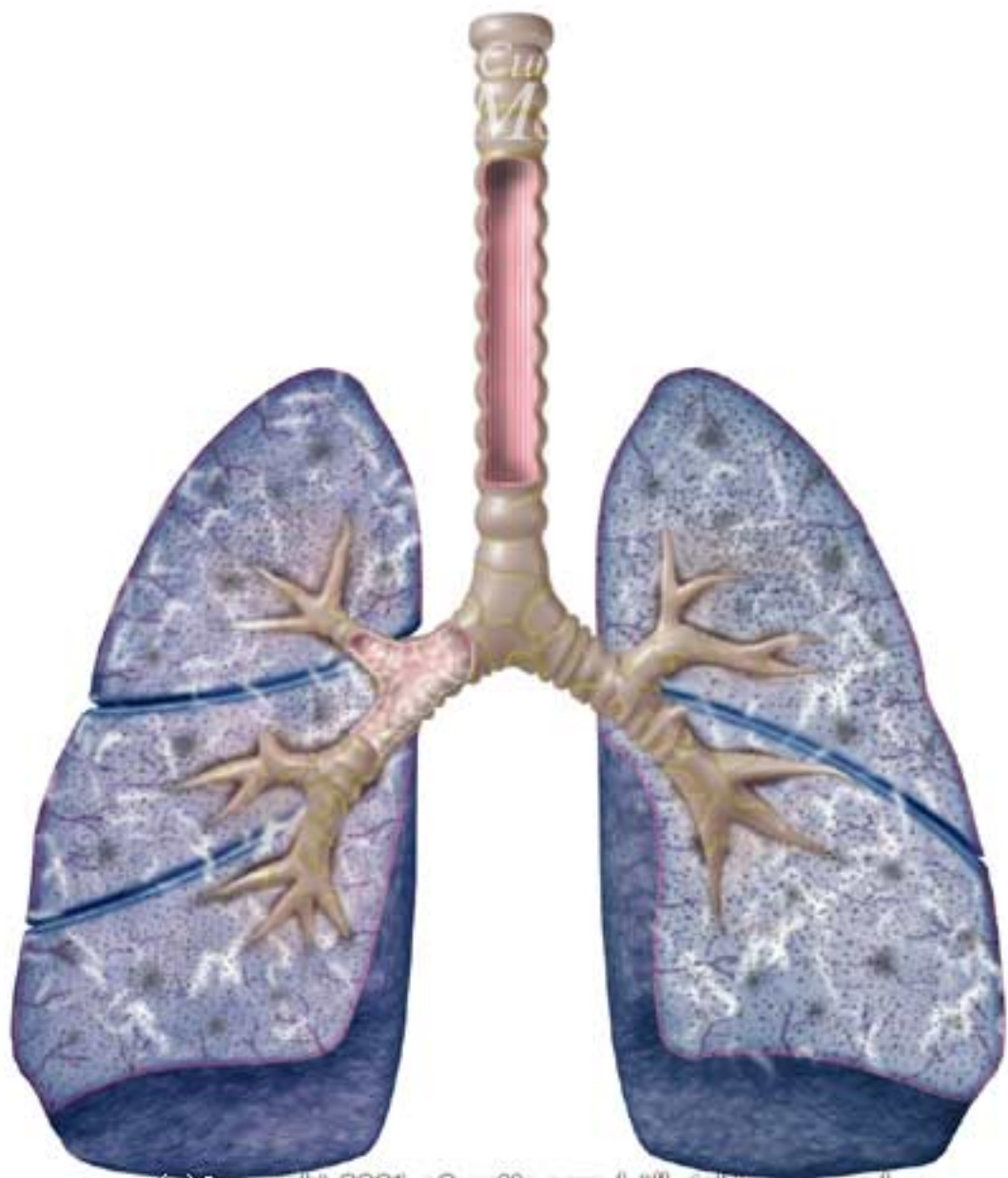




(c)Copyright 2004 eGanMe.com / All rights reserved.



(c)Copyright 2002 eGardMe.com / All rights reserved.



(c) Copyright 2001, eCureMe.com / All rights reserved.